

Excavation Unit: TRENCH A SECTION 1 Size of Unit: 2 x 1.5 M

Excavation Period: From APR 27, 1979 to MAY 15, 1979

Recorder: CABALLERO

Levels or Zones:

Features:

Designation	Top	Base	F.S. No's	Designation	Top	Base	F.S.	Map #
Zone 1 LEVEL 1	1.70	1.79	269	FEATURE 50	1.71	WAS LEFT IN SITE SEE TO NO. 10		2.4
" LEVEL 2 N 1/2	1.79	1.90	272	AREA 7	1.88	2.00	275	2
" LEVEL 2 S 1/2	1.79	1.89	273	" 8	1.93	2.02	277	2
" LEVEL 3 N 1/2	1.89	1.92	274	" 10	2.11	2.14	X	4
" LEVEL 3 S 1/2	1.89	2.12	276	" 11	2.10	2.17	X	4
Zone 2 LEVEL 1	2.00	2.10	279	" 12	2.10	2.25	X	4
" LEVEL 2	2.10	2.21	286	" 13	2.11	2.25	X	4
" LEVEL 3	2.21	2.30	288	" 14	2.11	—	X	4
				" 16	2.30	—	X	6
				" 17	2.31	—	X	6
				" 18	2.31	—	X	6

Photographs:

PL No. Subject

5 AREA 7 PROFILE

6 "

11 FEATURE 50

Soil Samples:           

Flotation Samples:           

F.S. # Provenience

275 AREA 7

F.S. # Provenience

Stratigraphic Record No's. 1

Critical Pgs. in Notes:           

Walls Profiled:

North South East West

Part 1: 81-147 Part 2: 1-6

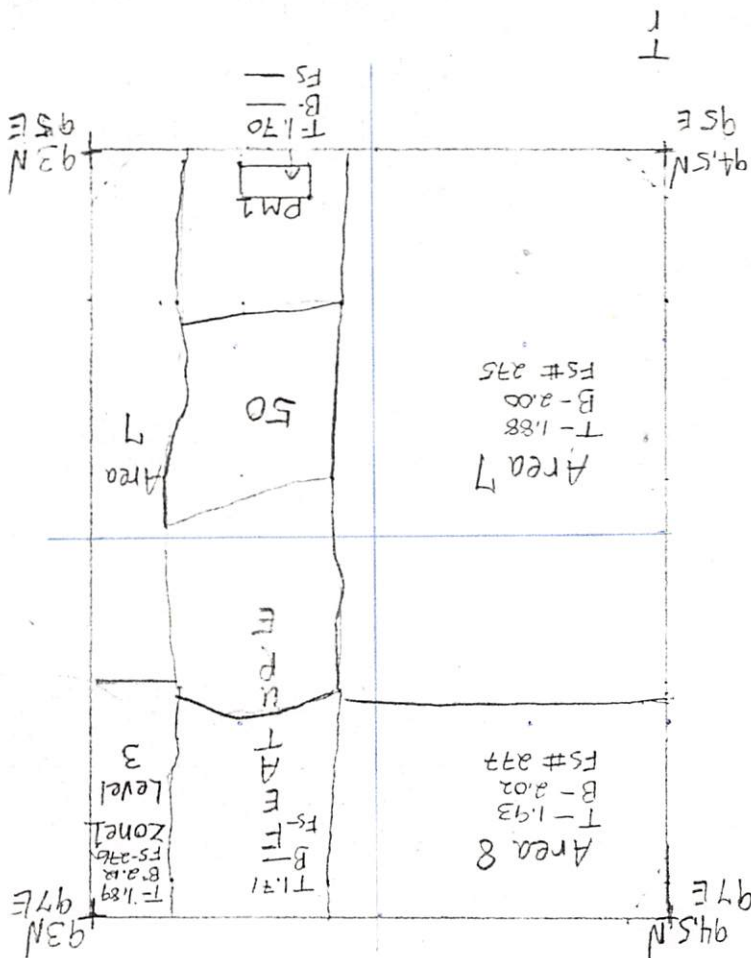
Comments

SIGNATURE	TOP	BASE	FS#	MAP	
OUT 1	2.11	2.16	X	4	5
" 2	2.11	2.15	X	4	4
" 3	2.10	2.14	X	4	4
" 4	2.11	2.13	X	4	2
" 5	2.11	2.14	X	4	3
" 6	2.11	2.17	X	4	6
" 7	2.11	2.17	X	4	6
" 8	2.12	2.17	X	4	5
" 9	2.12	2.15	X	4	3
" 10	2.13	2.16	X	4	3
" 11	2.12	2.20	X	4	8
" 12	2.11	2.16	X	4	5
" 13	2.30	—	X	6	
PPM 1	2.31	—	X	6	>
" 2	2.31	—	X	6	X

X- NO CULTURAL MATERIAL FOUND

St. Pierre May 2, 1979

Map 2  
SA 26-1  
May 2, 1979  
TRENCH A  
Section 2  
1:20

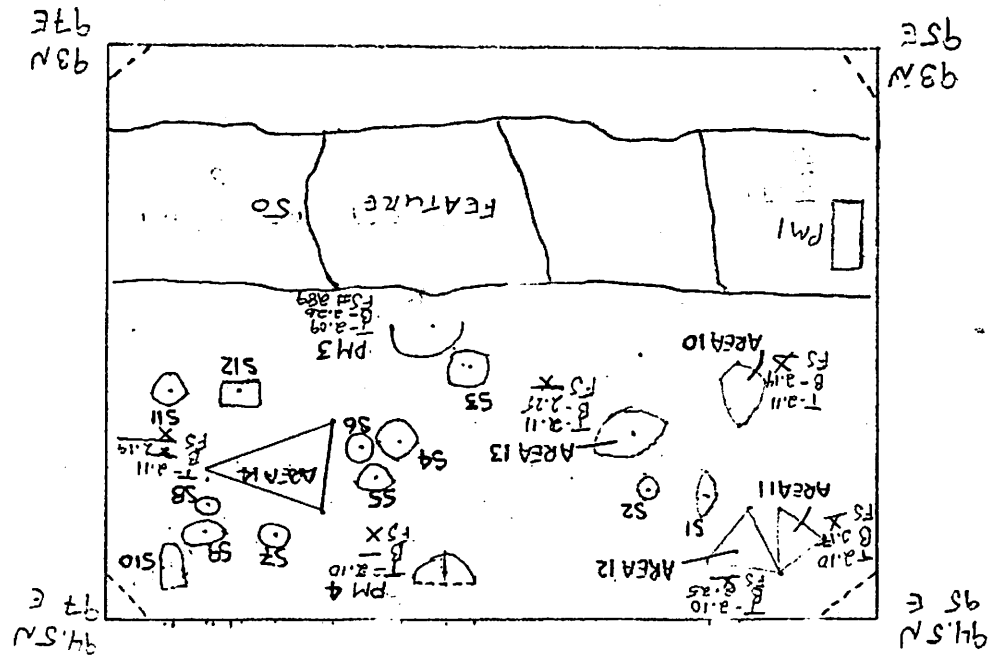


2

MAP 4	
SA 26-1 TRENCH A SECT	
SCALE 1:20 METRIC	
C. STEVENS 5-3-79	
L. KONGER 4 MAY 79	

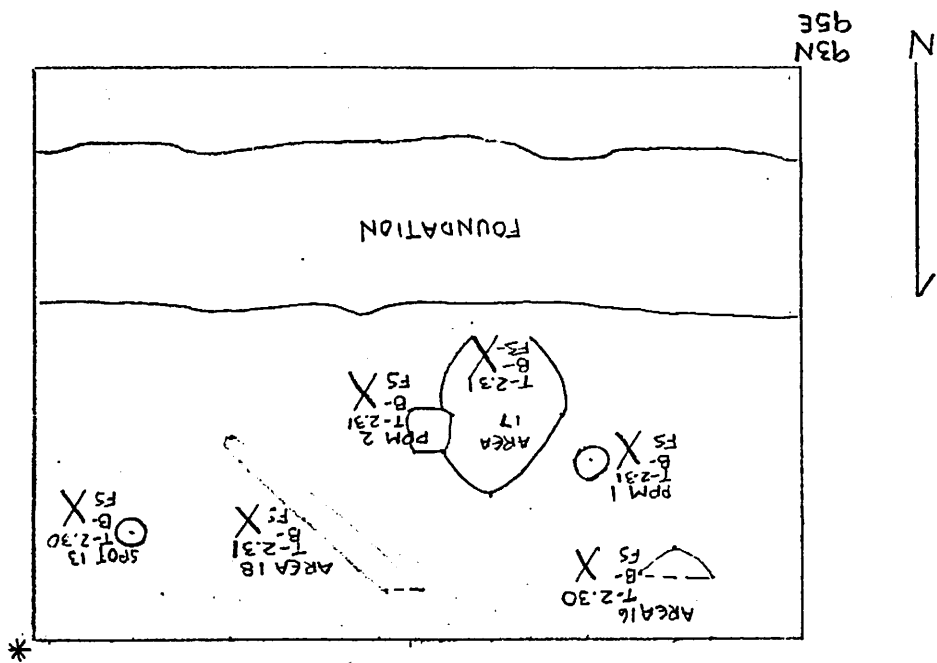
X - no cultural material

SPOT	Top	Base	FS	Spot	Top	Base	FS
S1	2.11	2.16	X	S7	2.11	2.17	X
S2	2.11	2.15	X	S8	2.12	2.17	X
S3	2.10	2.14	X	S9	2.12	2.15	X
S4	2.11	2.13	X	S10	2.13	2.16	X
S5	2.11	2.14	X	S11	2.12	2.20	X
S6	2.11	2.17	X	S12	2.11	2.16	X



MAP 6  
 SA-26-1 TRENCH A SECT 1  
 SCALE 1:20 METRIC  
 Julie King  
 5-10-79

\*ALL OF THESE FEATURES WERE  
 CULTURALLY STERILE - NO BACTERIA  
 WERE TAKEN, NO FS# ASSIGNED



SA 26-1

Map 15

Stratigraphy of PM's

Scale 1:5 metric

Trench A section 1

May 25 1979

Name	Date
C.T. ENGLISH	05/25

35 cm  
12.5 cm 22.5 cm  
1.88 MBD

PH 2  
T-1.88  
B-2.28  
FS-NONE

PM 13  
T-1.905  
B-2.21  
FS-NONE

PM 12  
T-1.88  
B-2.155  
FS-NONE

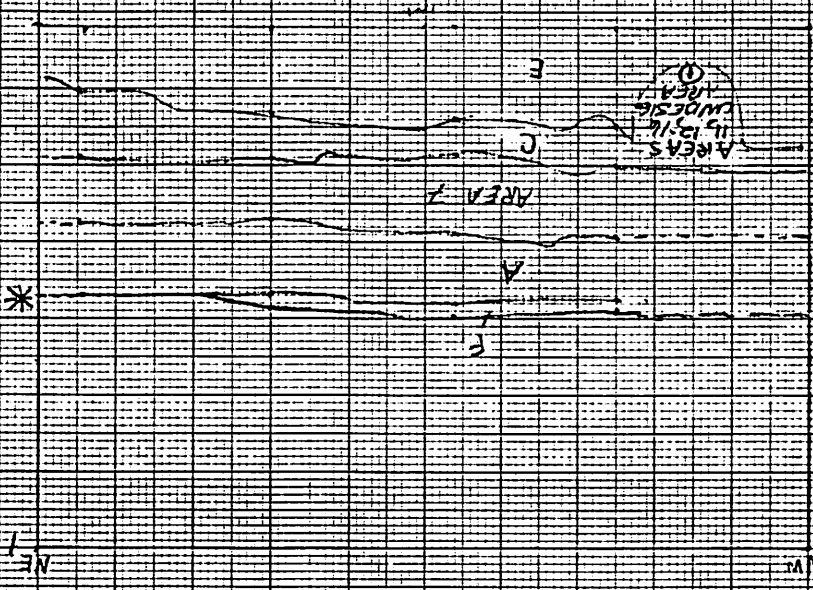
PH 2

cm

SA 26-1 MAY 15, 1979  
STRATIGRAPHIC RECORD 1  
SCALE 1:20  
TRENCH A SECTION 1  
NORTH PROFILE  
MAPPER  
RICHARD VERNON  
DATE 5-15-79

\* THIS IS NOT TRUE GROUND SURFACE, 20-30cm WAS GRADED DOWN!

- F. MODERN DISTURBED
- D. GREY-BROWN SANDY (ZONE 1)
- C. GOLD/LIGHT GREY-BROWN WOTMED SAND (ZONE 2)
- E. GOLD STERILE SAND
- AREA 7 - COMPACT WHOLE OYSTER + CLAM SHELL
- IN DARK BROWN MATRIX



# STRATIGRAPHIC RECORD FORM

SITE\* SA-26-1

Date 5-15-79

Recorder CABALLERO

Strat Record# 1

Excavation Unit TRENCH A SECTION 1

Walls Profiled (N) S W E

## Definition of Stratified Layers & Corresponding Excavation Units

<u>Layer</u>	<u>Excavated As:</u>
A - GREY-BROWN SANDY SOIL	ZONE 1 <del>1</del>
B	
C - GOLD/LIGHT GREY-BROWN MOTTLED SAND	ZONE 2 <del>2</del>
D	
E - STERILE SOIL, GOLD	
F - MODERN DISTURBED BLACK-GREY LOAMY SOIL	
G	

## Features, Intrusions:

AREA 7, (11, 12, 16) - (ALL IN UNDESIGNATED AREA 1)  
 ↑  
 FS# 274

FS#'s For Profile Material: NONE

P L #'s: 5, 6

Unit Map Reference: 2, 4, 6

Pages in Notes: 5 & 6 (pt. 2)

\* THIS PROFILE DOES NOT INITIATE AT GROUND SURFACE - APPROX. 20-30cm OF MODERN FILL WAS GRADED DOWN WITH A FRONT END LOADER.